



A QUALICO Company

# Award Winning

Visitable Elevation



Illustrations are artist concepts and may vary.

**Bungalow**  
**2 Bedrooms**  
**2 Bathrooms**  
**1115 sq. ft.**

- Attractive home-front details including vinyl siding and shakes, cultured stone, and painted trims
- Large master suite ensuite bath and two spacious closets
- Designer kitchen with corner pantry and maple cabinetry
- Nice-sized dinette for eating, entertaining and family time
- Custom windows to provide both beauty and natural lighting to your home

## 201 Plan

# THE EMERALD

(b-rev0-9-12)



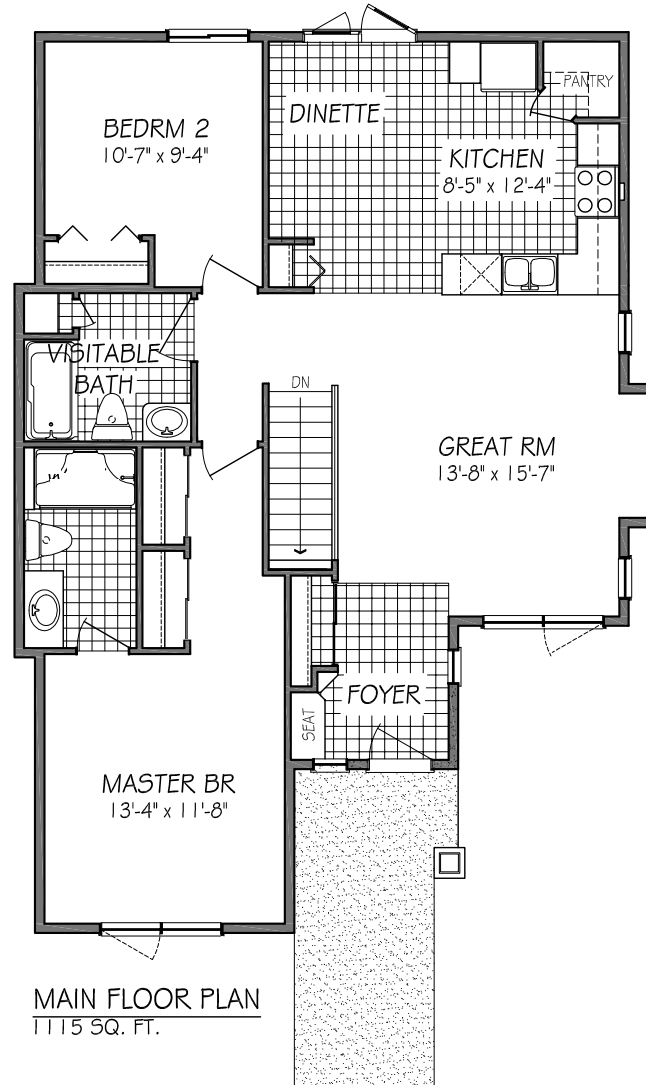
A QUALICO Company

Award Winning

# The Emerald

## 201 Floor Plan

(b-rev0-9-12)



MAIN FLOOR PLAN  
1115 SQ. FT.

All illustrations are artist's conception and may vary. Room dimensions are approximate. Windows and room sizes may vary with elevations. Mechanical equipment location and placement subject to change as required by building code and at discretion of builder. Furniture outlines for purpose of visualizing room layout only, furniture not included. Kensington Homes reserves the right to change material or specifications without notice.