



A QUALICO Company

Award Winning

Elevation B



Illustrations are artist concepts and may vary.

2 Storey
 4 Bedrooms
 2 ½ Bathrooms
 2858 sq. ft.

- Attractive home front details including cultured stone, shakes, and pillars
- Large master bedroom with walk-in closet and deluxe ensuite including stand-alone tub
- Designer kitchen with large island, breakfast bar and usable countertops
- Second floor family room with space for everyone
- Convenient second floor laundry room
- 22' x 22' attached garage
- Optional lower level development
- VISIBLE floor plan

873 Plan

THE BRAMPTON

(b-rev0-9-10)



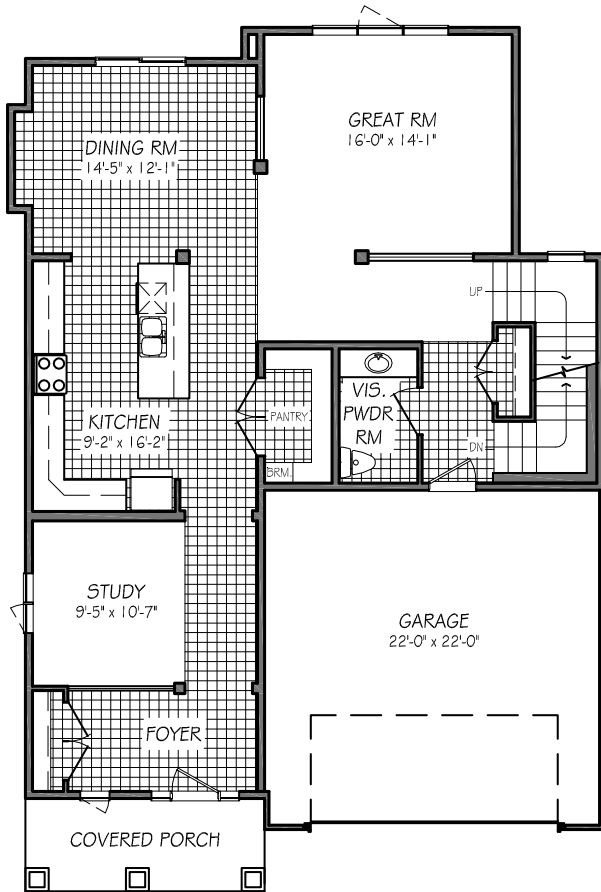
A QUALICO Company

Award Winning

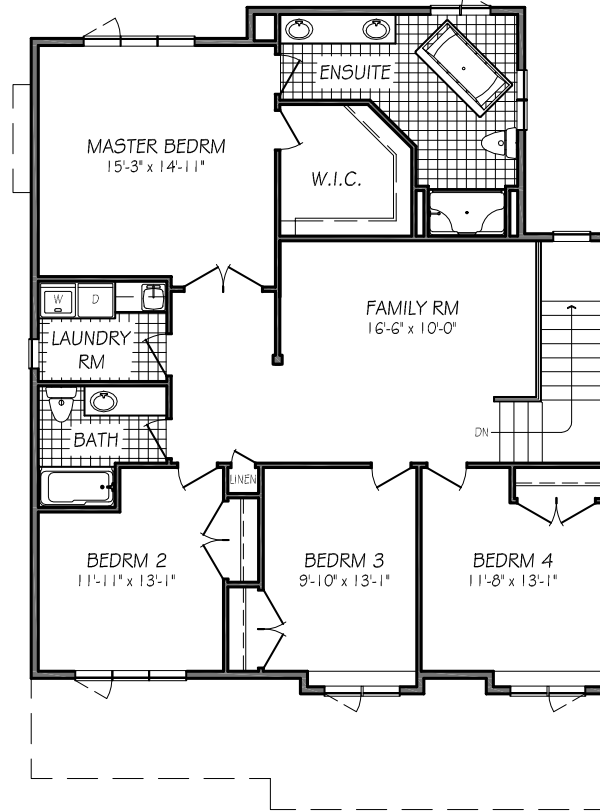
The Brampton

873 Floor Plan

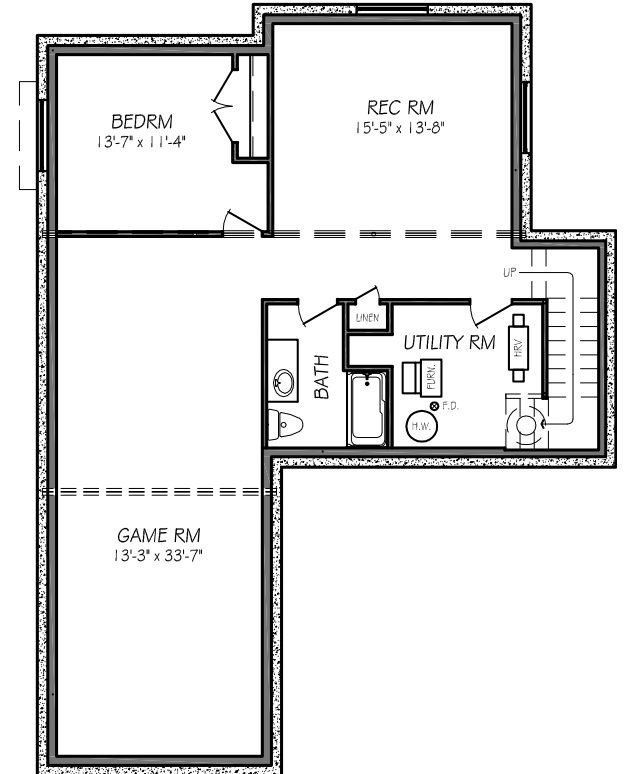
(b-rev0-9-10)



MAIN FLOOR PLAN
1335 SQ. FT.



SECOND FLOOR PLAN
1523 SQ. FT.



OPT'L BASEMENT FLOOR PLAN
972 SQ. FT.

All illustrations are artist's conception and may vary. Room dimensions are approximate. Windows and room sizes may vary with elevations. Mechanical equipment location and placement subject to change as required by building code and at discretion of builder. Furniture outlines for purpose of visualizing room layout only, furniture not included. Kensington Homes reserves the right to change material or specifications without notice.